

# Returning to Campus with the Woodland App

If you are returning to campus for in-person classes, you will need to complete a daily health screening and then do contact tracing throughout the day with the Woodland App. Here is how:

1. Download and install the Woodland App to your phone:

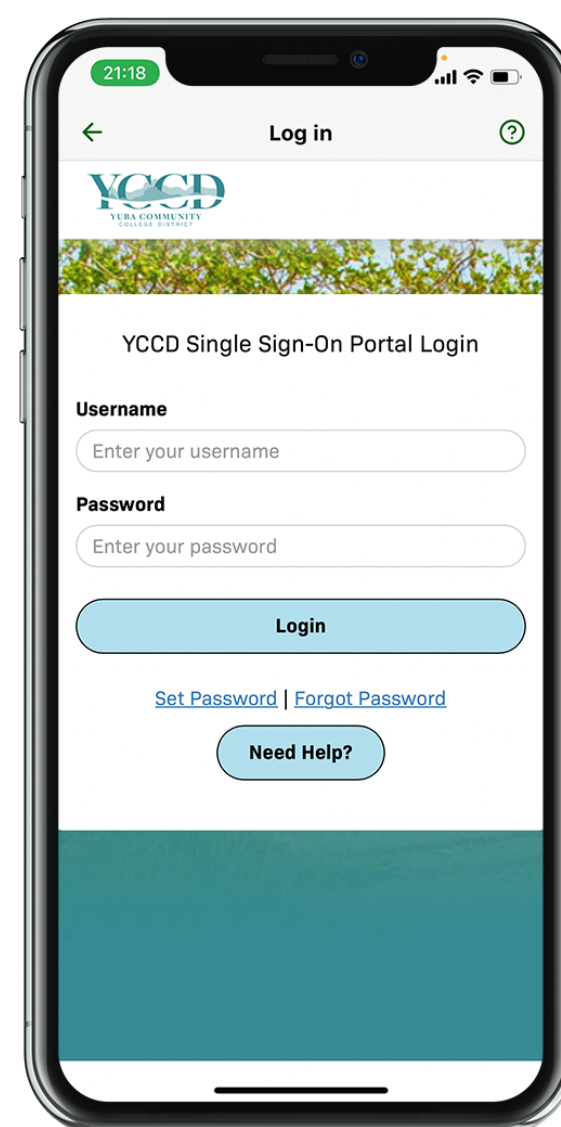
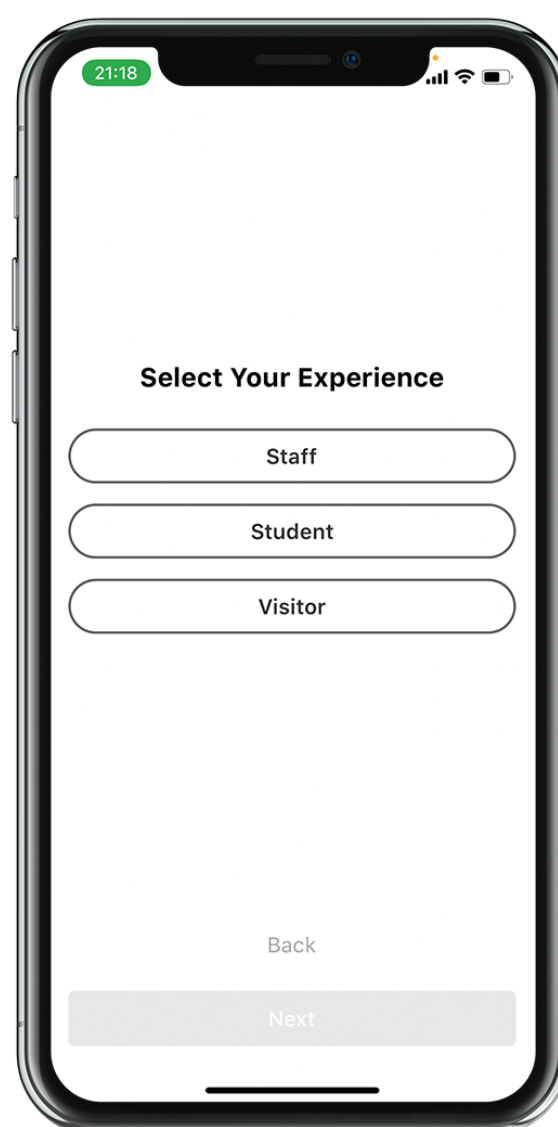
## Download Links:

**iOS:** <https://apps.apple.com/us/app/woodland-community-college/id1087117854>

**Android:** <https://play.google.com/store/apps/details?id=com.oohlala.woodland>

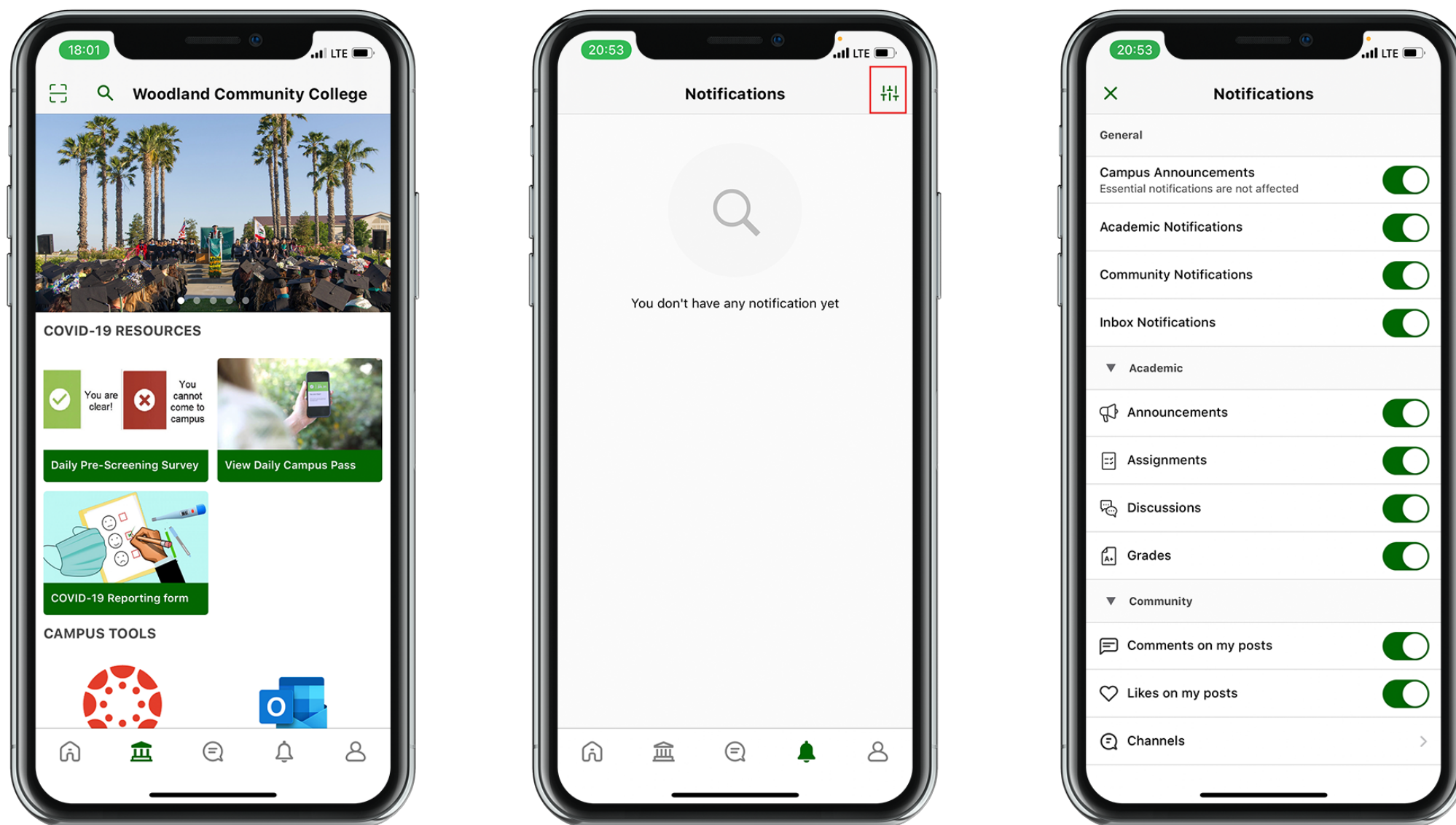


2. Choose your campus and log into the app with your username and password.



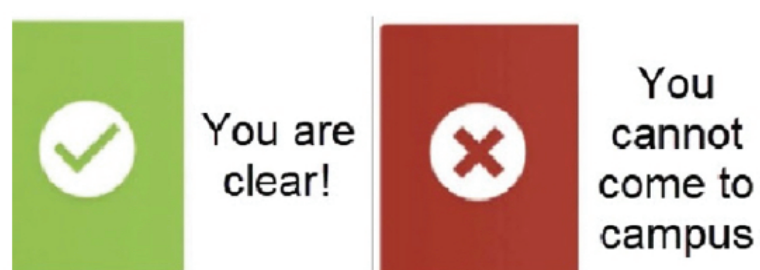
## Returning to Campus with the Woodland App (cont.)

3. Make sure notifications are enabled in the app by clicking the bell shaped icon at the bottom of the screen and then the preferences icon at the top right:



## Daily Pre-Screening Survey

1. Within the app, you will receive a daily reminder to complete the Daily Pre-Screening Survey form at home, prior coming to campus. If you tap on the notification, you can fill out the form right away. If you miss the notification or you need to fill out the pre-screening survey, you can tap on this “tile”:



**Daily Pre-Screening Survey**

2. Your campus pass will reset everyday. You will need to fill out the Daily Pre-Screening Survey each day you come to campus to obtain your Daily Campus Pass for the day.

3. You do not have a smartphone, there will be a kiosk(s) at your campus to fill out the pre-screening survey and obtain your daily pass. Or you can get a link to fill out the pre-screening survey from your home computer by contacting: [CovidResponseCenter@yccd.edu](mailto:CovidResponseCenter@yccd.edu).





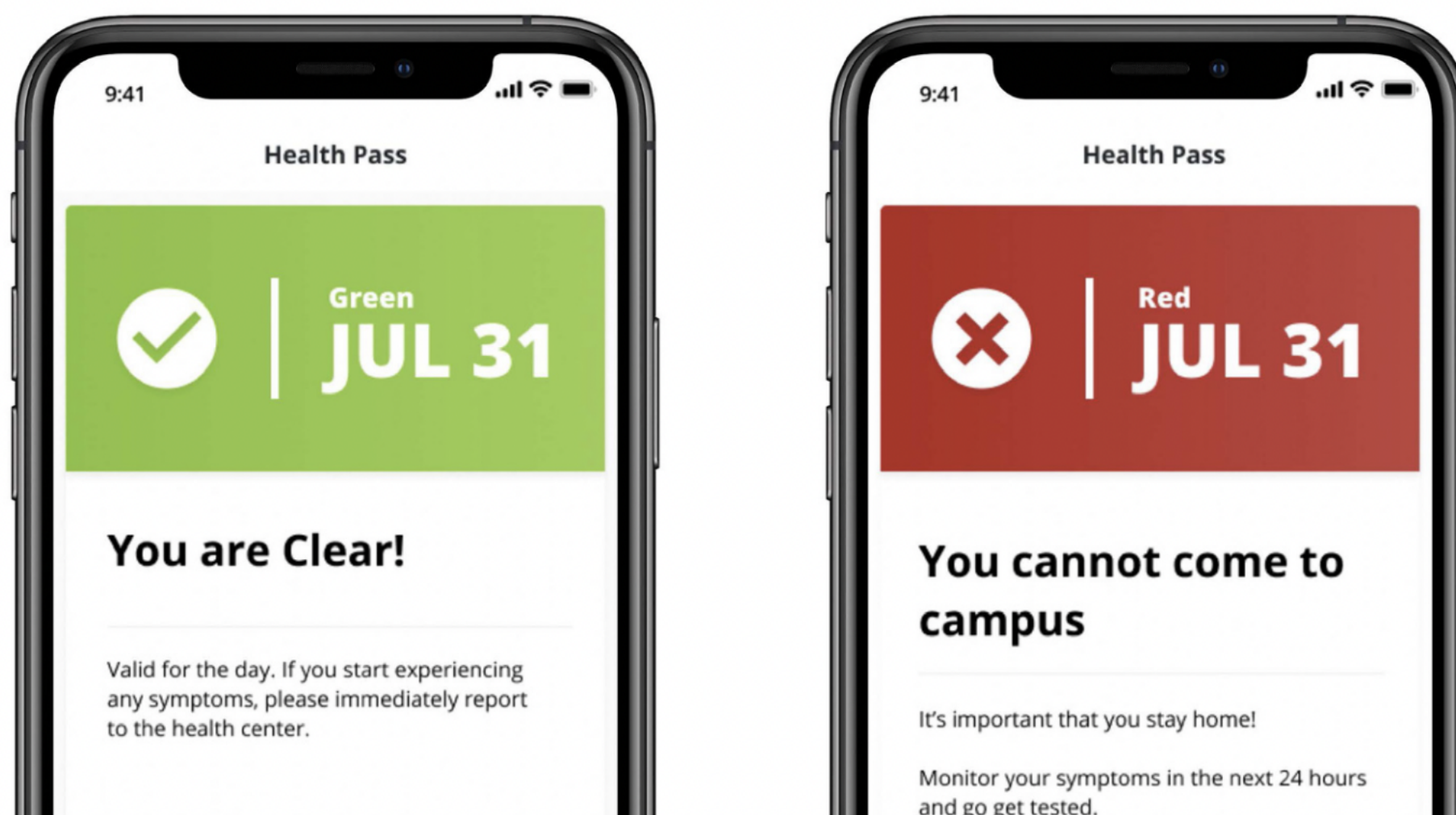
## Daily Pre-Screening Survey

4. Based on the answers you provided, the app will issue a health pass.

A **“Green”** pass indicates you are clear to proceed to campus.

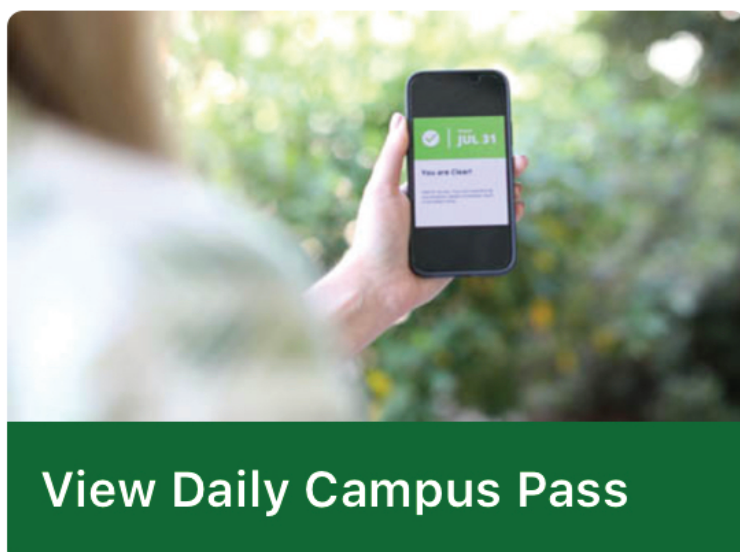
A **“Red”** pass means do not go to campus.

Other passes may display on your app depending on your vaccination/testing status or other factors. Be sure to read the detailed instructions on the pass.



## View Daily Campus Pass

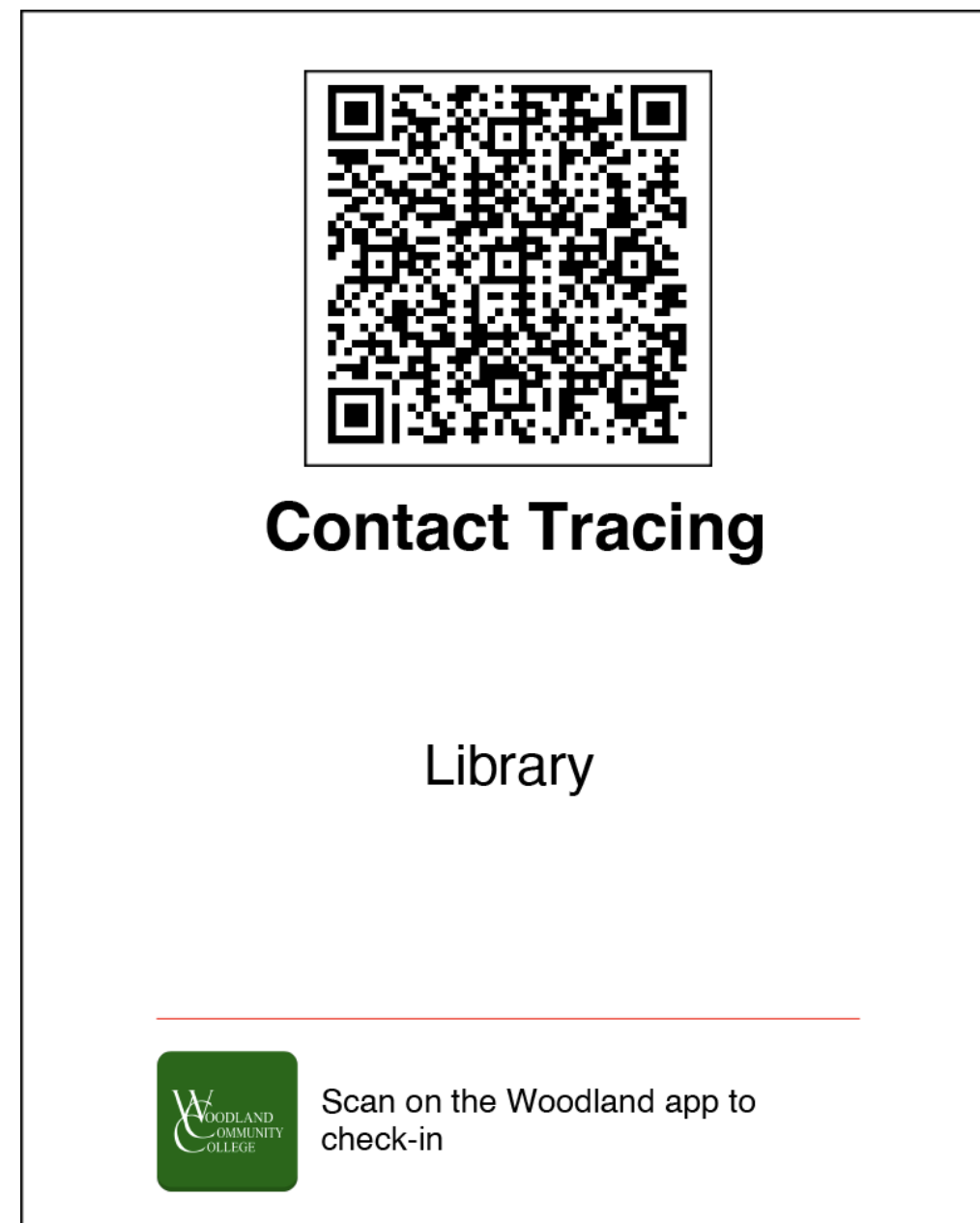
Your campus pass will let you view your current level of access to campus based on your vaccination or weekly test result status or pre-screening survey information you provide. Viewing your daily campus pass allows you to verify that you are allowed to be on campus for that day, or shows you the next steps required for you to gain entry to campus and appropriate contact information.



View Daily Campus Pass

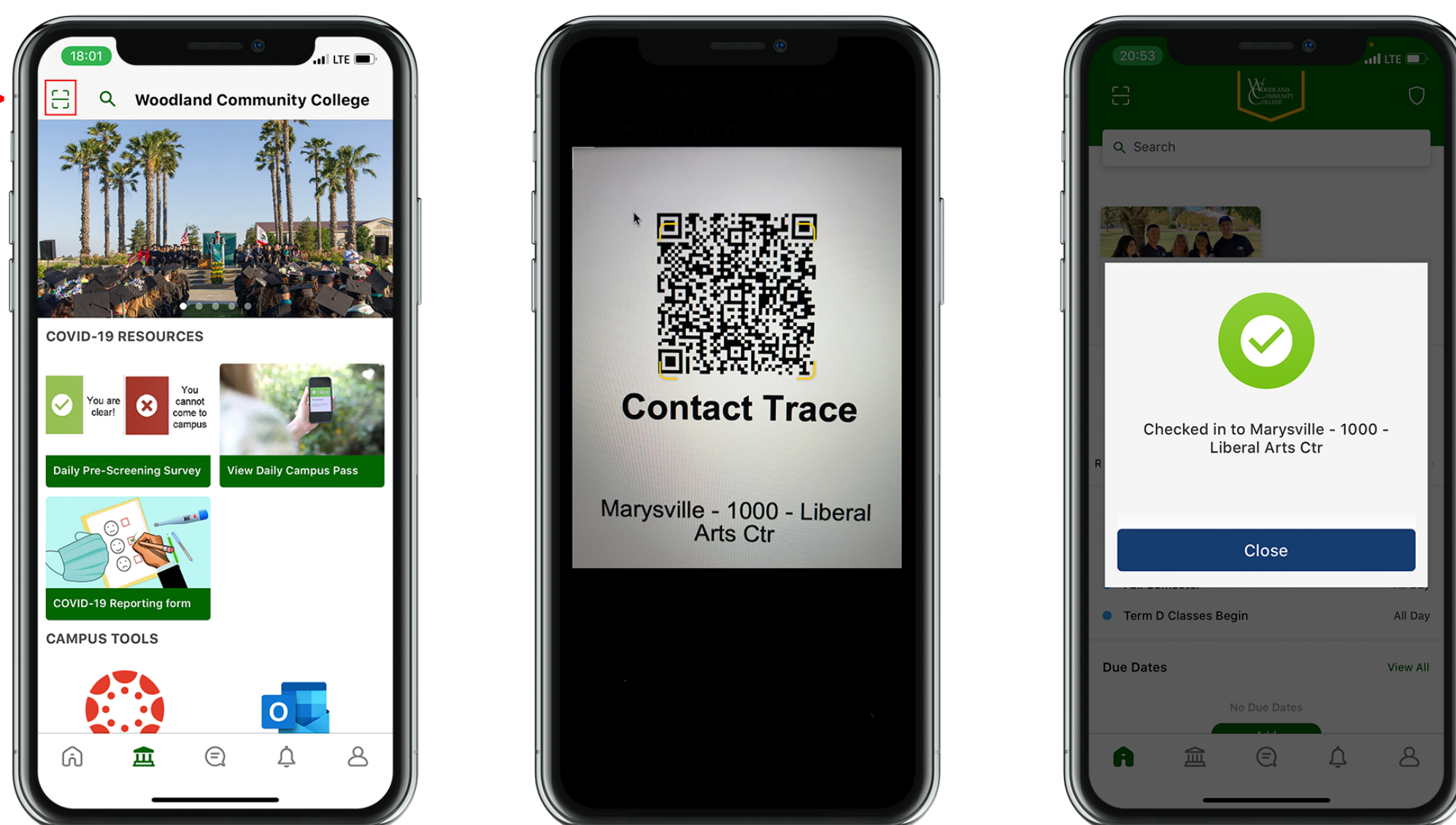
# Building Room Check-In / Contact Tracing

As you move around campus, you will be required to check-in to buildings and rooms by scanning QR codes posted on doors and walls as you enter. They look like the example below.



1. Check-in by clicking the box with the line through it at the top left of the app and scanning the QR code in the room. DO NOT SCAN THE CODE WITH YOUR PHONE'S CAMERA APP. THEY MUST BE SCANNED IN THE WCC APP TO CHECK-IN PROPERLY.

Scanner  
on app >>>



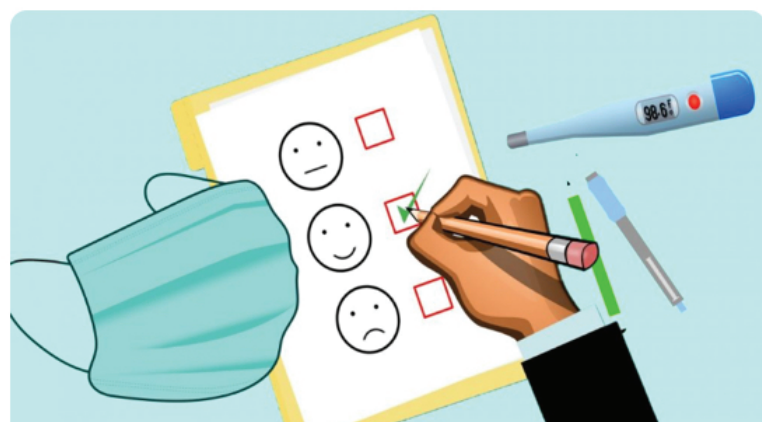
2. Be sure to look for and scan QR codes in every area you visit on campus. In the case of a COVID-19 exposure, this will help us to contact the people who have also been in those areas. Be sure to scan the codes again as you leave the room to check-out.





# COVID-19 Reporting Form

The COVID-19 Reporting Form questionnaire is for any student, faculty, staff experiencing COVID-like symptoms, been in close contact with an individual who has a confirmed case of COVID, or you yourself have tested positive for COVID-19. This assists in keeping our campus and community COVID-free. A Contact Tracer will then follow up with you.



COVID-19 Reporting form