

Implicit Bias

Wednesday, August 11, 2021

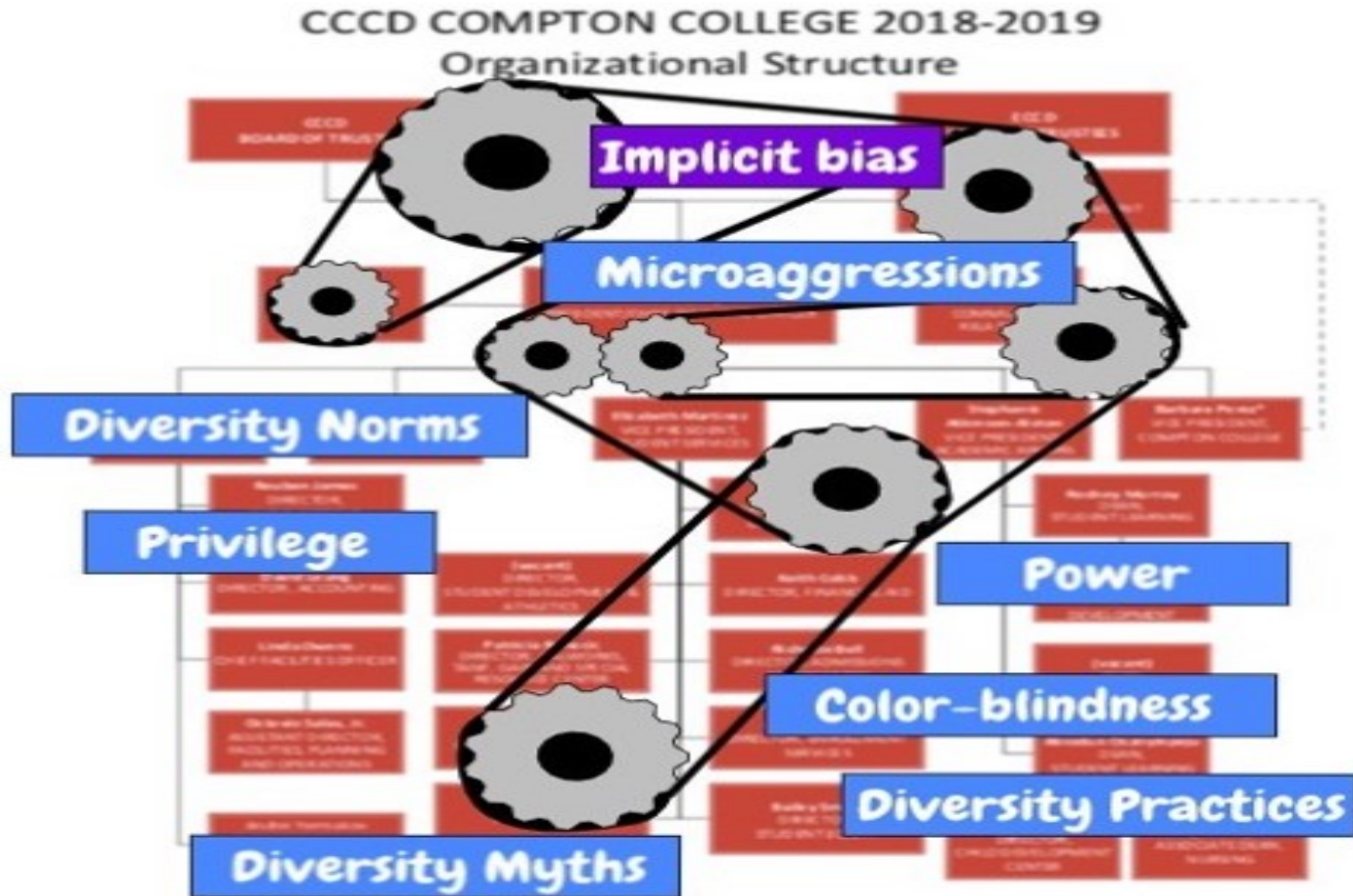


Implicit Bias

Implicit, or unconscious, bias refers to the attitudes or stereotypes that affect our understanding, actions, and decisions in an unconscious manner. We all make assessments involuntarily, or outside of our intentional control, and those assessments affect our behavior.

Compton College

The Ghost In the Machine



Adopted from Presentation from Dr. Jesús Treviño, Ph.D., Senior Diversity Officer, The Leadership in Diversity Group, LLC to Compton College Managers/Supervisors – August 14, 2020

Implicit Bias – August 11, 2021

Implicit Bias Question

1. Have your attitudes or stereotypes affected your understanding, actions, and decisions?
2. How do we have conversations and professional development regarding implicit bias within our organizations.
3. What's Next?