



Woodland Community College September Town Hall

Thursday, September 10, 2020
12-1 p.m.

<https://cccconfer.zoom.us/j/97987631161>

+1 669 900 6833 (US Toll)
Meeting ID: 979-8763-1161



Agenda

- ▶ Welcome - President Pimentel
- ▶ COVID-19 Updates - President Pimentel
- ▶ Fall 2020 Enrollment Updates - VPI Gardner
- ▶ Spring 2021 Schedule Development- VPI Gardner
- ▶ Early Alert Re-Launch- VPI Gardner/Dean Fowler
- ▶ Convocation Survey - Dean Brazil-Cruz
- ▶ Food Distribution Days- Dean Brazil-Cruz
- ▶ Food Pantry & Snack Packs- Dean Brazil-Cruz
- ▶ College Bienvenida - Dean Brazil-Cruz
- ▶ Transfer Fair- VPSS Esquivel-Swinson
- ▶ Career Workshops - VPSS Esquivel-Swinson
- ▶ Performing Arts & Culinary Facilities Project Update- President Pimentel
- ▶ College Facilities Updates - President Pimentel
- ▶ Q & A



COVID 19- Update

- ▶ Ongoing communication with district leadership and county health officials
- ▶ Continued monitoring of state, county & service areas
- ▶ Guidelines & protocols - Pandemic Response Plan
- ▶ Operating models
- ▶ Planning ahead - Instruction, on site services...



Fall 2020 Enrollment Updates

- ▶ Annual Goal of 2500 FTES with 185 FTEF (Productivity of 13.5)
- ▶ FTES - Full Time Equivalent Student is one student taking 30 units a year
- ▶ FTEF - Full Time Equivalent Faculty is 30 instructional units a year
- ▶ Summer 2020, WCC FTES was up 4% from 2019 at 276 FTES and 21.3 FTEF
- ▶ Fall 2020 WCC will be flat from Fall 2019, while the trend is -10% in California
 - ▶ Our headcount has increased, but average unit enrollment has decreased
 - ▶ Concurrently enrollment has increased 22%
 - ▶ Student body has moved slightly younger (19-22 years), more female (3% increase, now 66%), and slightly less Latino from (49% to 46%)



Fall 2020 Enrollment Updates (continued)

- ▶ Fall Forecast, 1086 FTES with 79.50 FTEF
- ▶ 2020-2021 through Fall 2020 is currently estimated at 1362 FTES, 101 FTEF, with a productivity of 13.5- about 55% of the annual goal
- ▶ Spring 2021 will need to be a little bigger than Fall 2020, to meet the goal and to support the Lake goal of 497 FTES*
- ▶ What happens if we don't meet the goal?
 - ▶ Stability, Funding Floor from CCCCCO through 2021
 - ▶ "Hold Harmless" from New Funding Formula extended through 2023-2024
- ▶ Are you interested in strategic enrollment management (SEM)? Stay tuned for updated from PIE about scheduling and SEM



Spring 2021 Schedule Development

- ▶ Conservative approach to Covid-19 with approximately 80% of courses online and 20% F2F, mostly in hard to convert or essential sectors

Timeline

- ▶ Schedule Roll has occurred on August 31
- ▶ Deans working on first draft with faculty input, first review on September 15
- ▶ Between September 18 and 28, feedback from scheduling committee and second draft developed with deans and campus feedback
- ▶ October 9-16, deans submit staffing to scheduler for input into the system
- ▶ October 16, data is entered and PDF schedule production begins
- ▶ October 26, schedule goes live- Registration begins November 16



Early Alert Re-Launch

A screenshot of the Woodland Community College website's Early Alert section. The header includes navigation links for Students, Parents, Alumni, and Faculty & Staff. Below this is a green bar with links for Apply, Admissions, and Academics. The main heading is 'Early Alert: Identify Student' over a background image of a campus building. There are two green buttons: 'Look up by student id' and 'Look up by student last name'. A small link 'reload search criteria' is below the buttons. At the bottom is a grey banner with the text 'Get In Touch'.

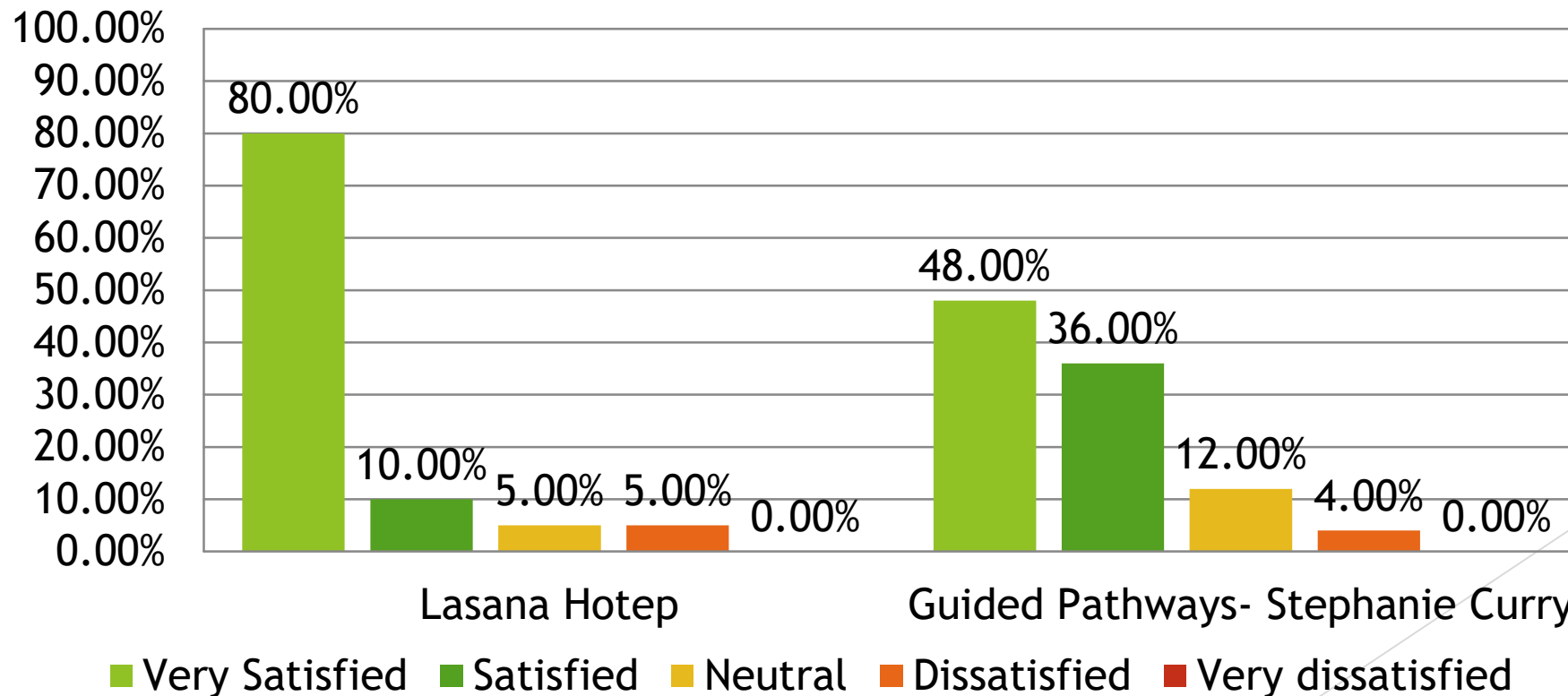
- ▶ Early Alert Relaunched Sept 3
- ▶ System is live now through website
- ▶ FAQ and Highlights in Email
 - ▶ Lake Integration
 - ▶ Expanded Response Team
 - ▶ 169 Tickets in Spring 2020
 - ▶ Professor Cisneros is on-point
- ▶ SAGE and Guided Pathways
- ▶ Thank you Lake and Student Services!

Submitting a ticket

Convocation

- 42 participants
- 46% participants indicated being very satisfied with convocation and 54% indicated being satisfied.

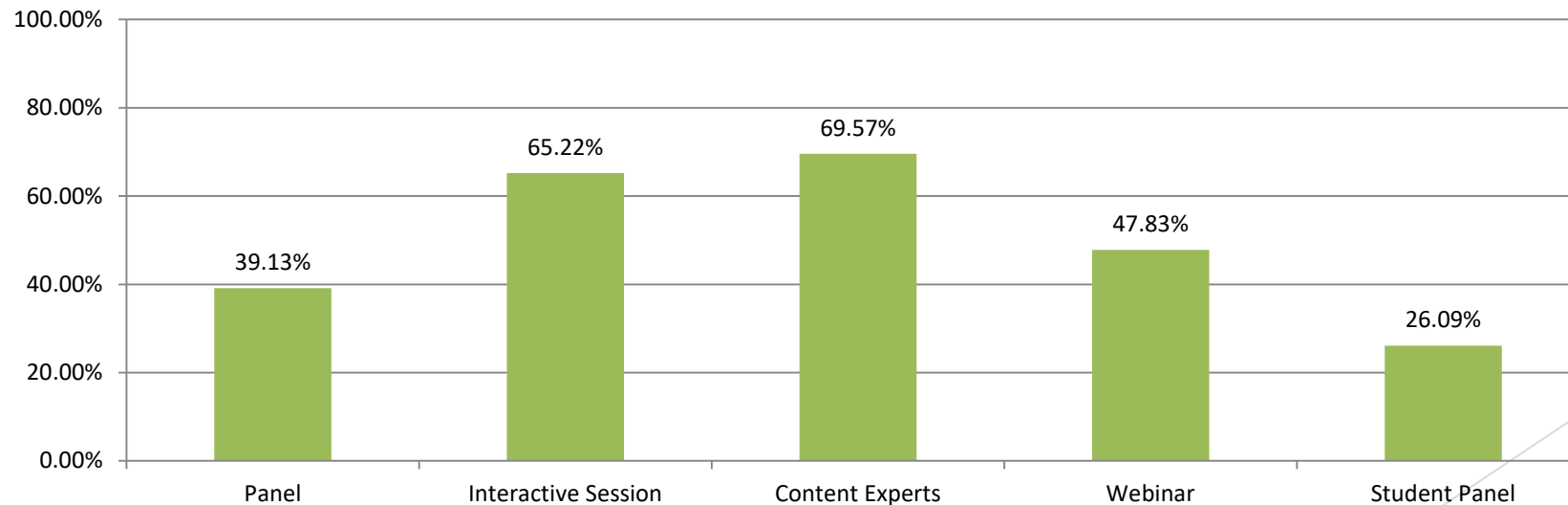
Keynote Speakers





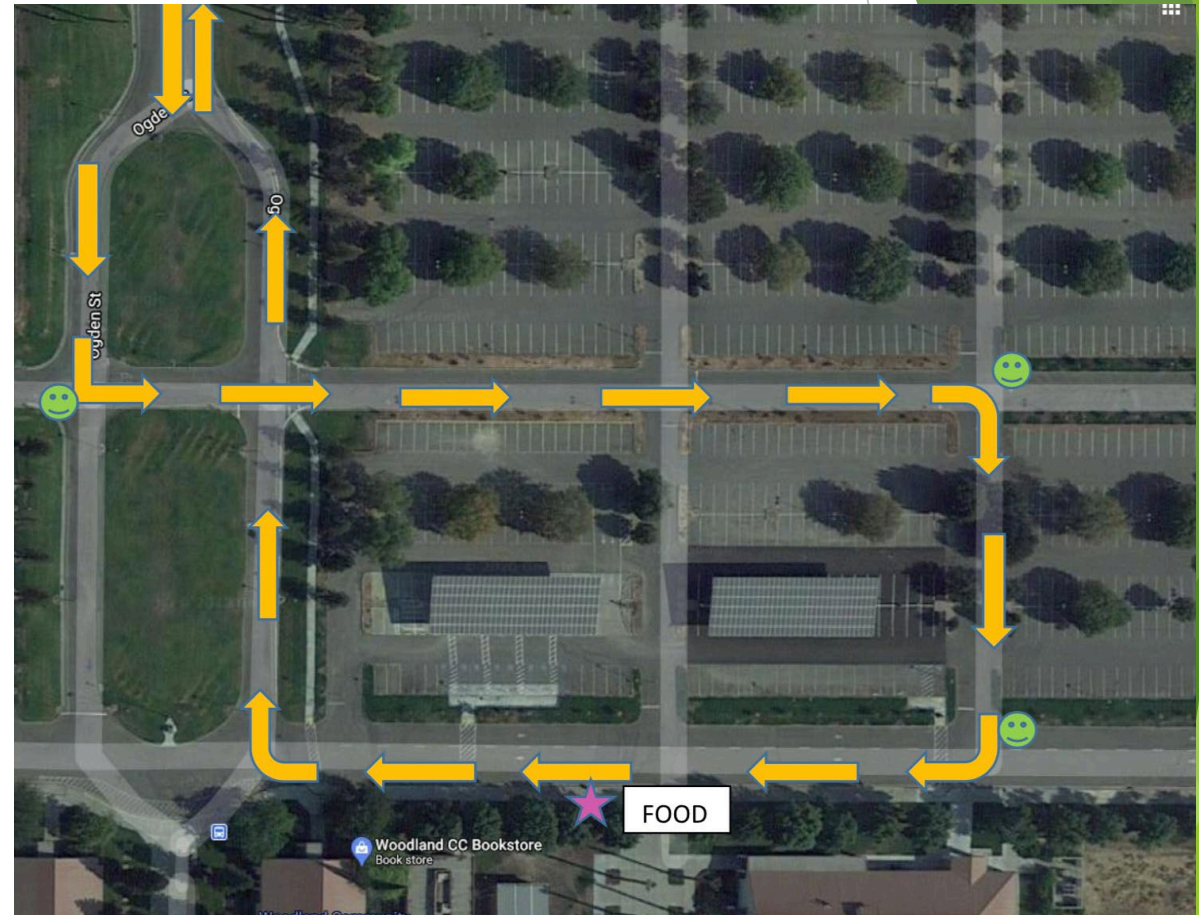
Convocation

Online Pedagogy
Equity Issues
Updates from all campuses
Guided Pathways
Career Professional Development
Open Educational Resources - OER.



Food Distribution Days

- Touchless food distribution
- Monthly 1st Tuesday and 3rd Wednesday of the month
- Initial distribution on Wednesday September 16th 12-1pm





The graphic features a central white circle with a grey border, containing text about the WCC Food Pantry. The background is a vibrant green with various food items like watermelon, bread, and snacks scattered around. To the right, there are abstract green geometric shapes.

WCC Food Pantry

OPEN Mon- Thurs 8am-5pm

WCC Building 700, Office 763

*Now featuring:
Snacks, canned foods,
microwaveable meals
& WCC-grown produce!*



THE WCC FOOD PANTRY PRESENTS

DRIVE-UP SNACK PACKS

OCTOBER 6 & 7
11am - 4pm



**SNACK PACKS WILL BE DISTRIBUTED IN THE
WCC PARKING LOT NEAR BUILDING 700**

Drive-up to receive your care package, including snacks & toiletry items!
For more info, check out the [WCC Food Pantry](#) page .

College Bienvenida 2020

**SEPT 24TH
12PM**

***Bienvenida*
2020**





Transfer Center

- Advising & Counseling
- Application Assistance
- ADT
- TAG
- Virtual University Tours
- Transfer Workshops
- Transfer Student Experience
- Transfer Fair



Aracely Ruiz, Transfer Counselor
530.668.2580
aruiz1@yccd.edu



Career Workshops



Career Workshop Wednesdays

- Intro to Career Planning
- Resume Development
- *College Central Network : Jobs, Resumes & More*
- *Career Assessments*
- *Connecting Interests to Major & Career Options*

Lorell Cooke, Career Counselor
530.661.5730

lcooke@yccd.edu

Performing Arts & Culinary Arts Project Update



- Project team meets every month
- Groundbreaking -
 - Late spring/early summer 2021

College Facilities Update

▶ WCC

- ▶ 600 Building Roofing Project
- ▶ 800 Building SSC Renovation Project
- ▶ Community Room Flooring Project
- ▶ Distance Ed Ready Classrooms

▶ LCC

- ▶ 400 Building Roofing & Retaining Wall Project
- ▶ PG & E Micro Grid



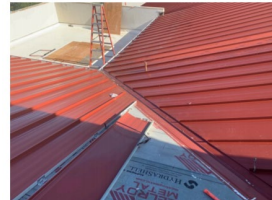
Job Site Progress Report
08/12/2020



Overview



Overview





THANK
YOU