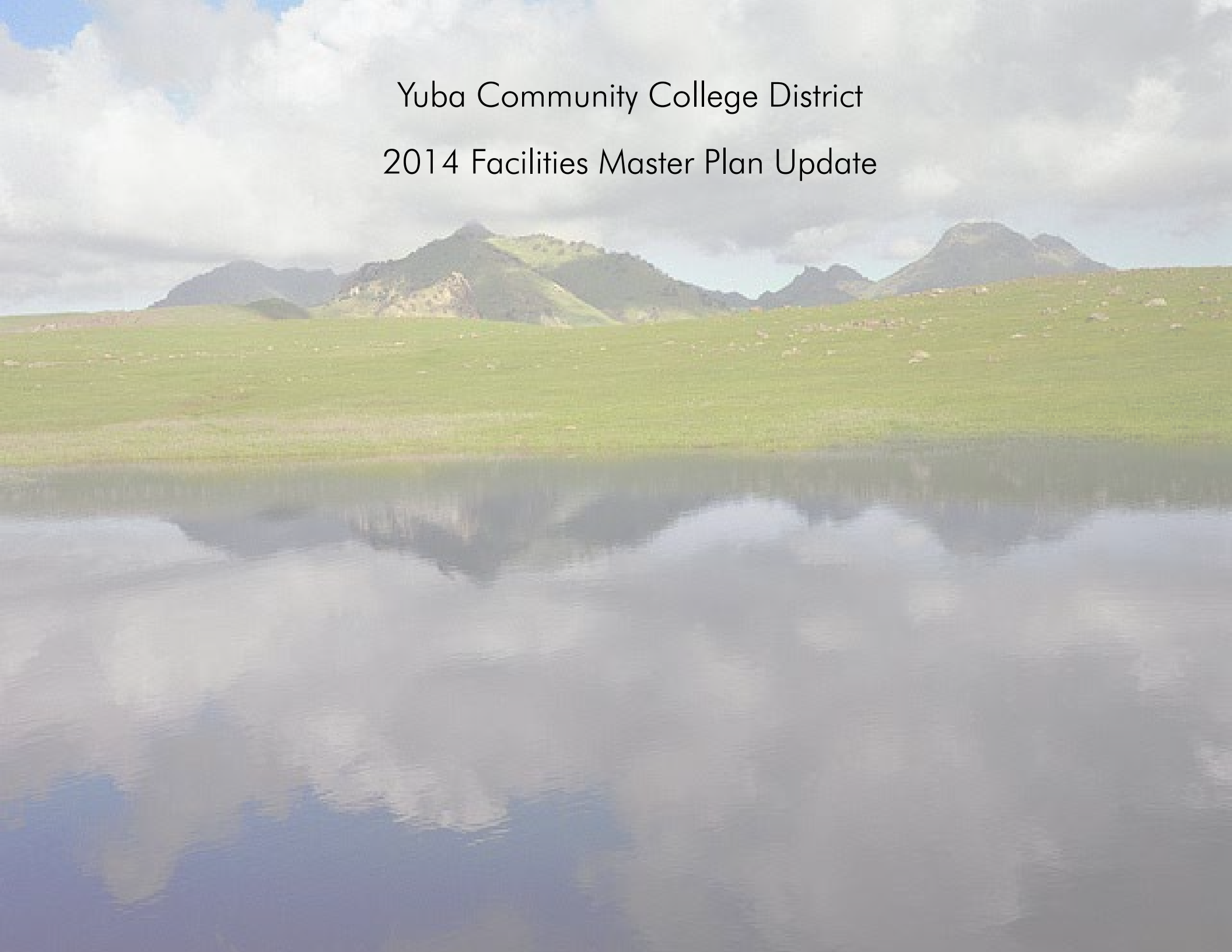


Yuba Community College District  
2014 Facilities Master Plan Update



# FACILITIES MASTER PLAN UPDATE

## OCTOBER 2014



### **Board of Trustees**

Brent Hastey, Trustee

David Wheeler, Board President

Emma Willard, Student Trustee, Yuba College

Gary Sandy, Vice President

Jesse Foster, Student Trustee, Woodland Community College

Jim Kennedy, Trustee

Michael K. Pasquale, Trustee

V. Richard Savarese, Trustee

Xavier C. Tafoya, Trustee

# Table of Contents

Yuba Community College District | 2014 Facilities Master Plan Update

---

01	I. EXECUTIVE SUMMARY
04	II. YUBA COLLEGE
19	III. SUTTER COUNTY CENTER
23	IV. CLEAR LAKE CENTER
28	V. WOODLAND COLLEGE
33	VI. COLUSA CENTER
37	VII. CONCLUSION

## Executive Summary

In early 2006, the Yuba Community College District completed a comprehensive Facilities Master Plan (FMP). The FMP provided an overview of District facilities and their condition, and needs. Ultimately, the Plan identified new facilities projects, as well as existing facilities renovations to meet the higher education needs of the communities it serves. The following table summarizes the projects included in the 2006 FMP:

***The 2006 Facilities Master Plan identified the following needs:***

Yuba College	Improvements
Renovation/ADA	All existing buildings
New Construction	A 60,000 sq ft. classroom building to support health occupation programs and expand science and math offerings
Infrastructure/Systems	Replace aged electrical systems and increase capacity for technology Heating and cooling systems replacement All underground utilities are past useful life and need replacement
Technology	Upgrades needed in all buildings Increase capability for distance education offerings
Woodland College	Improvements
Renovation/ADA	Renovate existing facilities to co-locate all student services functions Replace roof on building 700
New Construction	Visual and Performing Arts center Food service operations space with capacity for 200, including a commercial kitchen suitable for a culinary arts instructional program
Infrastructure/Systems	Upgrades necessary to support new buildings and expanded technology
Technology	Upgrade all existing classrooms into smart classrooms
Clear Lake Center	Improvements
Renovation/ADA	All existing buildings
New Construction	Demolition of 3 portables and construction of a 30,000 sq. ft. building with large classrooms, student services, library and bookstore Expanded facilities for culinary arts and instruction Science/lab facility
Infrastructure/Systems	Improvements to utilities, expansion for new facilities and technology
Technology	Expand and update technology infrastructure and access

<b>Sutter County Center</b>	<b>Improvements</b>
New Construction	50,000 sq. ft. classroom building and District office facility with 10-12 contemporary classrooms
<b>Colusa Center</b>	<b>Improvements</b>
New Construction	A District-owned facility for outreach educational services

Overall goals that were a part of the FMP included expanded access to technology, and the development or renovation of smart classrooms. The master plan also called for the creation of sustainable campuses that were compliant with Title 24, and the American's with Disabilities Act (ADA). Given the remoteness of the outreach centers, the FMP called for access to student services at each location. The centers were expected to be developed as "one stop shops" for students. Finally, greater distance education offerings, and the technology to support the program, were called for in the master plan.

The 2006 FMP estimated the program costs as follows:

<b>Facilities Master Plan 2006-2012</b>	<b>Yuba College</b>			<b>Woodland Community College</b>	
	<b>Marysville Campus</b>	<b>Sutter County Outreach Facility</b>	<b>Clear Lake Campus</b>	<b>Woodland CC Campus</b>	<b>Colusa County Outreach Facility</b>
New Construction	29,500,000		9,000,000	37,000,000	3,400,000
Educational Facility and Administrative Offices		31,000,000			
Renovations and Upgrades	56,370,000		4,680,000	10,600,000	
Payoff Borrowings	2,900,000		3,600,000	1,800,000	
<b>TOTAL</b>	<b>88,770,000</b>	<b>31,000,000</b>	<b>17,280,000</b>	<b>49,400,000</b>	<b>3,400,000</b>
<b>DISTRICT TOTAL</b>	<b>189,850,000</b>				

On November 2006, with voter support, the District passed Measure J. This \$190 Million bond measure gave the Yuba CCD the opportunity to complete many of the priorities outlined within the FMP. Following the passage of the bond measure, the District moved quickly to begin planning improvements at each existing campus, and the development of two new educational centers. Less than 10 years later, much that work is complete. However, the District has only spent \$131,779,155.34 of the \$190M approved by voters, because the current assessed valuation within the District will not support the total bond amount. Therefore, the District has remaining bond funding that it can access in the future.

Measure J brought significant improvements to the District. The District was able to achieve many of its goals. Access to education, and the expansion of programs, increased dramatically through the enhancement of existing campuses and the addition of two new educational centers. This 2014 Facilities Master Plan update documents the work that was completed following the approval of the 2006 FMP. The specific improvements completed at each campus are outlined in the pages that follow. The intent is that this FMP update will serve as a guide regarding the projects completed as a part of the recent building program, while also providing a foundation for future planning.

# Yuba College





The current Yuba College campus opened in 1962, and with the exception of the Adaptive Physical Education Building and the Science/ Math facility, the balance of the campus was noted as having significant modernization needs in 2006. Additionally, the current infrastructure was beyond its useful life. **The 2006 FMP outlined the following needs for Yuba College:**

Yuba College	Improvements
Renovation/ADA	All existing buildings
New Construction	A 60,000 sq. ft. classroom building to support health occupation programs and expand science and math offerings
Infrastructure/Systems	Replace aged electrical systems and increase capacity for technology Heating and cooling systems replacement All underground utilities are past useful life and need replacement
Technology	Upgrades needed in all buildings

## MEASURE J IMPROVEMENTS

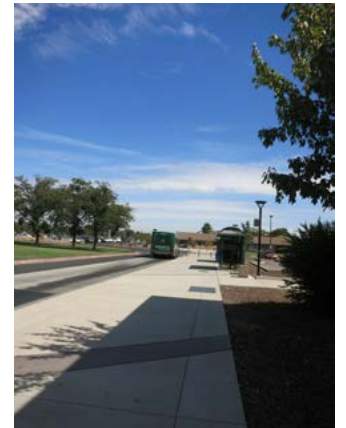
Below is information regarding the projects that were completed following the 2006 FMP and as a part of the Measure J facilities program.

### NEW CONSTRUCTION

**Building 2100 - Health and Public Safety Building**

**Building 2101 – Health and Public Safety Vehicle Storage**

**Building 2102 – Health and Public Safety Fire Tower**



Date Completed	Cost	Architect	Contractor
Parking, pathway – Sept. 2010 Building and tower – Sept. 2011	\$22,159,586	LPAS	Sundt Construction

*2100 Health and Public Safety – Square Footage Summary, in assignable square feet (ASF)*

Classroom	Laboratory	Office	Library	Support Space	Total ASF	Total Gross Square feet (GSF)
9,117	10,151	5,586	394	13,899	39,147	45,000

The new Health and Public Safety building and infrastructure improvements were constructed in three phases. The first phase included the parking lot improvements, the campus walk, (connecting this new facility to the balance of the campus), and the firewater distribution line. The second phase included the 2100 building, and the third phase was used to develop the fire tower and vehicle storage to support the Health and Public Safety Program. These facilities are located at the northeast end of the campus.

These facilities serve as a modern training center for the health and public safety professions. The single-story 2100 building includes smart classrooms as well as specialized laboratory facilities with modern technology and equipment to meet industry needs. This building includes the Nursing, Administration of Justice, Fire Technology, and Emergency Medical Technician programs. The 2100 building was designed to meet LEED Silver certification.

**Project Scope:**

- East parking lot improvements included the resurfacing and restriping of the east lot
- New concrete walk installed as pathway from building to the end of the main campus
- Extension of infrastructure and tie-ins for the building
- Construction of new Fire Tower and Vehicle Storage for the public safety equipment and vehicles
- Roadway to the vehicle storage and fire tower
- Concrete pad for the vehicle storage facility and training ground
- Construction of new 45,000 sq. ft. building
  - locker rooms
  - 25 offices, 4 conference rooms
  - 8 classrooms
- Central utility plant
- Landscaping improvements

### 2101 Health and Public Safety - Vehicle Storage Facility

*Square Footage - 6,454 ASF/ 6,500 GSF*

This new vehicle storage facility was constructed to house fire engines, and police vehicles for the Public Safety programs.

### 2102 Health and Public Safety – Fire Tower

*Square footage - 3,900 ASF/GSF*

Included in the Health and Public Safety complex is an exterior training ground, complete with obstacle course and a 3,900 sq. ft. fire training tower/burn building.

## RENOVATION PROJECTS

### Building 400 – Theater

Date Completed	Cost	Architect	Contractor	Year Built
August 2010	\$3,947,167	HGA	United Building Contractors	1963

*Square Footage - 9,048 ASF/ 14,091 GSF*

This was the first major renovation that the single-story building had experienced.

### Project Scope:

- Theater audio, visual and lighting systems upgrades
- Modifications to existing theater acoustical systems
- Repair of building HVAC systems and upgrade electrical systems
- Refurbishment of theater lobby
- Refurbishment of all seating (299 seats)
- Improvements for ADA compliance (including 2 chair lifts) and path of travel
- New curtains and rigging
- New roof



**Building 1100 – Library and Language Arts/ Distance Education**

Date Completed	Cost	Architect	Contractor	Year Built
December 2013	\$13,682,294 (Measure J and State Capital Outlay Funds)	LPAS	DPR Construction	1962 (an addition in 1975)

*Square Footage Summary*

Laboratory	Office	Library	AV/TV	Assembly	Support Space	Total ASF	Total GSF
520	4,274	21,362	5,593	3,729	160	35,638	41,748

This was the first major renovation for this two-story facility.

The campus library went through a complete transformation into a modern learning resource center. The building is divided into three zones. The first includes a lobby with doors opening to the College Success Center, Writing & Language Development Center from the central lobby area. The second zone includes the library, cyber (or computer) lab and adjunct faculty resources area. The third zone is entered from the rear doors and includes the language arts, journalism, ITV, distance education and mass communication spaces.

In keeping with the 2006 FMP, this is a sustainable, energy efficient building with modern technologies and resources. It includes a Student Success Center where tutoring takes place and students can find the resources they need to increase academic achievement. The library includes a 30-seat classroom for library instruction, 9 group-study rooms, 40+ computers for student research, and there is wireless capability throughout. There are 636 seats in the library.

**Project Scope:**

- Major interior renovation
- New interior finishes
- New systems (mechanical, electrical, fire alarm, AV, HVAC, telephone, data)
- ADA compliant
- Roof replacement
- Exterior paint
- Minor landscaping improvements



**Building 1200 – Physical Education Complex**

Date Completed	Cost	Architect	Contractor	Year Built
Field complex – August, 2010 Seating/press box - February 2011 1200 Bldg. – June, 2012	\$13,632,089	SKW Architects	Lamon Construction (athletic field and facilities) BRCO (1200 building)	1962 (with additions in 1991)

*Square Footage Summary*

Classroom	Office	P.E. Space	Support Space	Total ASF	Total GSF
6,231	1,903	15,419	15,573	39,126	49,720

This was the first major renovation for the gymnasium and associated athletic facilities.

**Track and field area improvements included:**

- Demolition of a deteriorated aquatics complex, and associated fuel storage tank
- New ADA accessible all-weather track
- Multi-purpose, turf athletic field (football & soccer)
- New multi-purpose grass practice field
- Stadium seating for 1,500 people
- Press box, scoreboard
- Conversion/ renovation of the old restroom facility into concession stand
- New restroom facility
- Grounds improvements of the area between the renovated gymnasium and the new field

**The renovation of Building 1200 included:**

- Roof replacement
- Interior and exterior upgrades and finishes including new wood flooring in the gymnasium
- New mat room, new weight room
- Fully refurbished locker room facilities
- Upgrade and/or replacement of the mechanical and electrical systems throughout the building (including lighting, A/V, telecom, security, and fire/life safety systems).
- ADA accessibility
- New HVAC, electrical/data/telephone, AV and fire alarm



**Building 1800 – Student Services**

Date Completed	Cost	Architect	Contractor	Year Built
March 2010	\$575,487	ImageWorks	United Building Contractors	1993

*Square Footage Summary*

Office	Library	Support Space	Total ASF	Total GSF
1,285	769	441	2,495	4,332

This facility houses Disabled Student Programs and Services and was the first major renovation for the building.

**Project Scope:**

- Structural upgrades
- New stucco exterior finish
- Complete interior ADA retrofit, ADA compliant restroom
- ADA compliant path of travel to the parking lot (new handi-capped parking and accessible sidewalk and ramp)
- Roof replacement
- Interior finishes
- Mechanical (HVAC) and electrical systems upgrades

**Building 600 – Applied Arts and Science Tech**

Date Completed	Cost	Architect	Contractor	Year Built
March 2010	\$697,093	ImageWorks Turley & Associates (engineers for the air units)	United Building Contractors	1962 (some modifications in 1995)

*Square Footage Summary*

Classroom	Laboratory	Office	Library	Total ASF	Total GSF
402	19,877	1,006	90	21,375	24,062

This was the first major renovation for the single story building.

**Project Scope:**

- Replaced the air-handling units were replaced to accommodate the welding program
- Mechanical and electrical upgrades occurred
- Interior renovations to classrooms
- New roof
- New exterior paint
- Technology upgrades for both welding and the automotive program
- Hazardous materials abatement was completed

**MINOR RENOVATION PROJECTS****Building 800 – Life Science**

Date Completed	Cost	Architect	Contractor	Year Built
July 2009	\$171,824	Lionakis	Wayne Neault Construction	1962 (modifications in 1982)

**Project Scope:**

- Room 814A – Rewire existing vent fan for manual on/off override and provide for adequate ventilation per room requirements
- Room 853 – Install suitable frog storage facility (prefabricated pools with oxygenation system)
- Room 853C – Provide natural gas lab bench top outlets and fume hood in prep lab
- Room 816 – Provide downdraft dissection table exhaust ducting and fan for three tables

**Building 1000 – Liberal Arts/ Consumer Education**

Date Completed	Cost	Architect	Contractor	Year Built
September 2008	\$1,498,215	Lionakis	Lakmann Construction Inc. Wayne Neault, Landscaping and hardscaping	1962

**Project Scope:**

- New HVAC, electrical, data and telephone, new AV and fire alarm system
- New roof
- New windows
- New landscape and hardscape in the open courtyard
- New interior finishes (ceiling, lights, furniture, paint, flooring)
- Renovated restrooms
- New ceramic kilns

**Building 1900 – Distributive Education Center**

Date Completed	Cost	Architect	Year Built
August 2008	\$71,207	ImageWorks	1980

**Project Scope**

- New Roof

**UTILITIES****Building 900 – Utility Services**

Date Completed	Cost	Architect	Contractor
Fire Water Line – January 2011 Central Plant - August 2011	\$2,909,632	Sandis Engineering (Fire Water Line) Interface Engineering (Central Plant)	AIRCO (Central Plant)

**Project Scope:**

- Central plant
- New fire-water distribution line

**TECHNOLOGY SYSTEMS****Telecom/Security**

Date Completed	Cost	Contractor
Back-up generator - August 2009 HVAC and server room – March 2010	\$4,252,693	Koch Excavating (back-up generator)

**Project Scope:**

- Emergency back-up generator (with associated new electrical and natural gas line to accommodate the generator)
- Server room HVAC upgrade (two, 7.5 ton package units and software for their operation)
- Server room wire management and racks

**DEFERRED PROJECTS - PLANNING FOR FUTURE DEVELOPMENT**

The following projects were considered within the 2006 FMP, and completed some preliminary planning during the Measure J program. As a result, some Measure J funding was expended on these projects. Should new funding be available, the District can consider resuming these projects. The specific intent during the Measure J program is outlined below as is the architect (if applicable).

**Building 500 – Business (Renovation)**

Plans were completed by DLR for the 500 building and can be found in the plan room at the District.

Date Completed	Cost	Architect	Year Built	GSF
Deferred	\$602,866	DLR	1962	15,623

**Scope Considered During Measure J Planning:**

- Renovate existing classrooms to include new finishes, furniture and equipment
- Provide network, telecommunications, and electrical infrastructure in classrooms being renovated
- Improve accessibility to comply with current code and ADA in classrooms being renovated
- Upgrade mechanical and electrical systems
- Replace roof
- Complete exterior fixes and paint

**Building 700 – Math/ Engineering/ Computer (Renovation)**

Date Completed	Cost	Architect	Year Built	GSF
Deferred	\$294,096	DLR	1971	14,090

Plans were completed by DLR for the 700 building and can be found in the plan room at the District.

**Scope Considered During Measure J Planning:**

- Renovate existing classrooms to include new finishes, furniture and equipment
- Provide network, telecommunications, and electrical infrastructure in classrooms being renovated
- Improve accessibility to comply with current code and ADA in classrooms being renovated
- Upgrade mechanical and electrical systems
- Replace roof
- Complete exterior fixes and paint

**Building 1250 – ESL (Demolition)**

Date Completed	Cost	GSF
Deferred	\$6,453	960

**Scope Considered During Measure J Planning:**

- This building is planned for removal.

**Building 1300 – Collins Hall, Staff Offices (Renovation)**

Date Completed	Cost	Architect	Year Built	GSF
Deferred	\$38,133	ImageWorks	1964	11,224

**Scope Considered During Measure J Planning:**

- Interior finishes and exterior painting
- Door hardware replacement
- Roof repair or replacement
- Electrical and mechanical upgrades

**Building 1400 – Maintenance/ Print Shop (Renovation)**

Date Completed	Cost	Year Built	GSF
Deferred	\$47,447	1962	21,920

**Scope Considered During Measure J Planning:**

- Interior finishes and exterior painting
- Door hardware replacement
- Roof repair or replacement
- Electrical and mechanical upgrades

**Building 1500 – Osuna Hall, Staff Offices (Decommissioning)**

Date Completed	Cost	Year Built	GSF
Deferred	\$15,521	1963	13,886

**Building 1600 – Warren Hall, Child Development/ Police Services (Renovation)**

Date Completed	Cost	Architect	Year Built	GSF
Deferred	\$56,935	ImageWorks	1966	13,026

**Scope Considered During Measure J Planning:**

- Interior finishes and exterior painting
- Door hardware replacement
- Roof repair or replacement
- Electrical and mechanical upgrades

**Building 100A – Administration**

Date Completed	Cost	Architect	Year Built
Deferred	\$58,837	LPAS	1973

**Project Scope**

- HVAC upgrades

**Building 100B Student/ Instruction Services**

Date Completed	Cost	Architect	Year Built
Deferred	\$209,043	LPAS	1962 (an addition in 1976)

**Project Scope:**

- Interior finishes included new ceilings, lighting, flooring and paint

**Building 200 – Music**

Date Completed	Cost	Architect	Year Built
Deferred	\$90,229	LPAS	1962

**Building 300 – Student Bookstore**

Date Completed	Cost	Architect	Year Built
Deferred	\$326,728	LPAS	1962 (with modifications in 1966)

**Project Scope:**

- Two make-up air handling units to serve the central kitchen were replaced

**ADDITIONAL MEASURE J EXPENDITURES****Temporary Swing Space Portables**

Cost	Year Built	Square Footage Added	Square Footage Remaining
\$936,755	2007	10,560	3,840

**Project Scope:**

Eleven temporary portable classrooms were purchased and placed on the Yuba College campus to provide swing space during the life of the construction program. At this time, four of those temporary portables remain.

**Building 1252 – Fire Damage Portable Replacement**

The District worked with Sally Swanson Architects to replace this fire-damaged facility. This work occurred in late 2008.

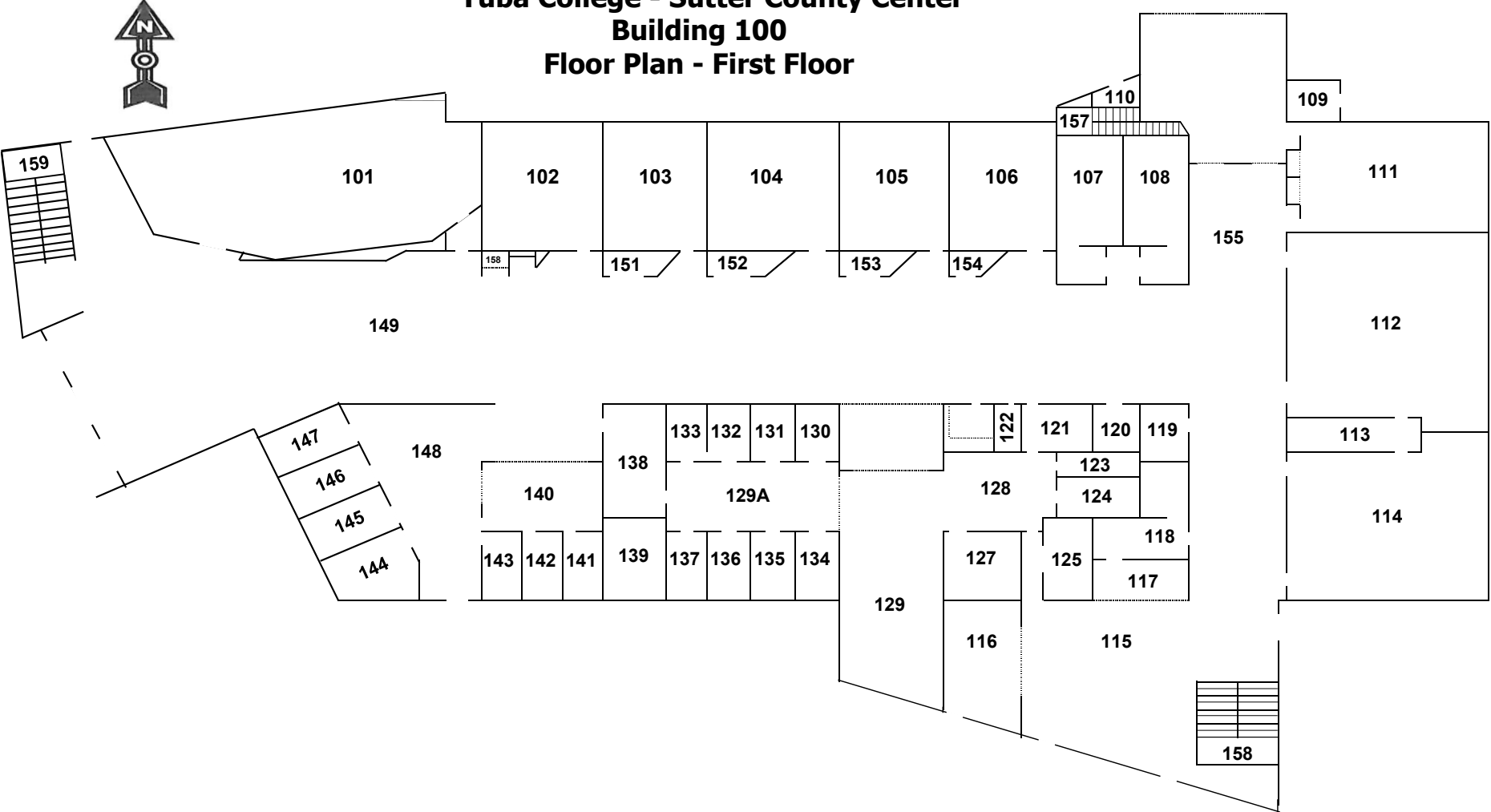
**Building 1700 - RAD Tech Relocation**

Cost - \$30,280

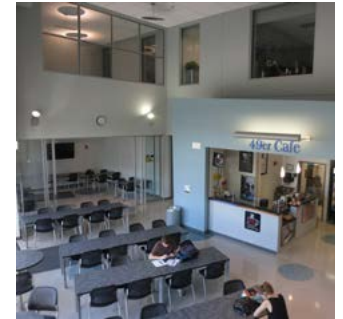
## Sutter County Education Center



**Yuba College - Sutter County Center  
Building 100  
Floor Plan - First Floor**



## 21



## SUTTER COUNTY EDUCATION CENTER

### NEW CONSTRUCTION

Date Completed	Cost	Architect	Contractor
August 2012	\$29,625,247	tBP Architecture	DPR Construction

#### Square Footage Summary (ASF)

Classroom	Laboratory	Office	Library	Support Space	Total ASF	Total GSF
17,402	412	6,451	2,710	18,130	45,505	53,854

The Sutter County Educational Center is the first higher education facility in the county. The center sits on 20 acres of District-owned property. It provides classrooms, a library/LRC, student services, success center, administration, faculty offices, groups study areas, café, and support spaces. The single building, two-story facility was designed to offer all of the services that students would need, thus ending the frequent need to visit a college campus. The facility is sustainable with a goal of LEED certification. It is also complete with smart classrooms, computers and the ability to easily access and utilize technology.

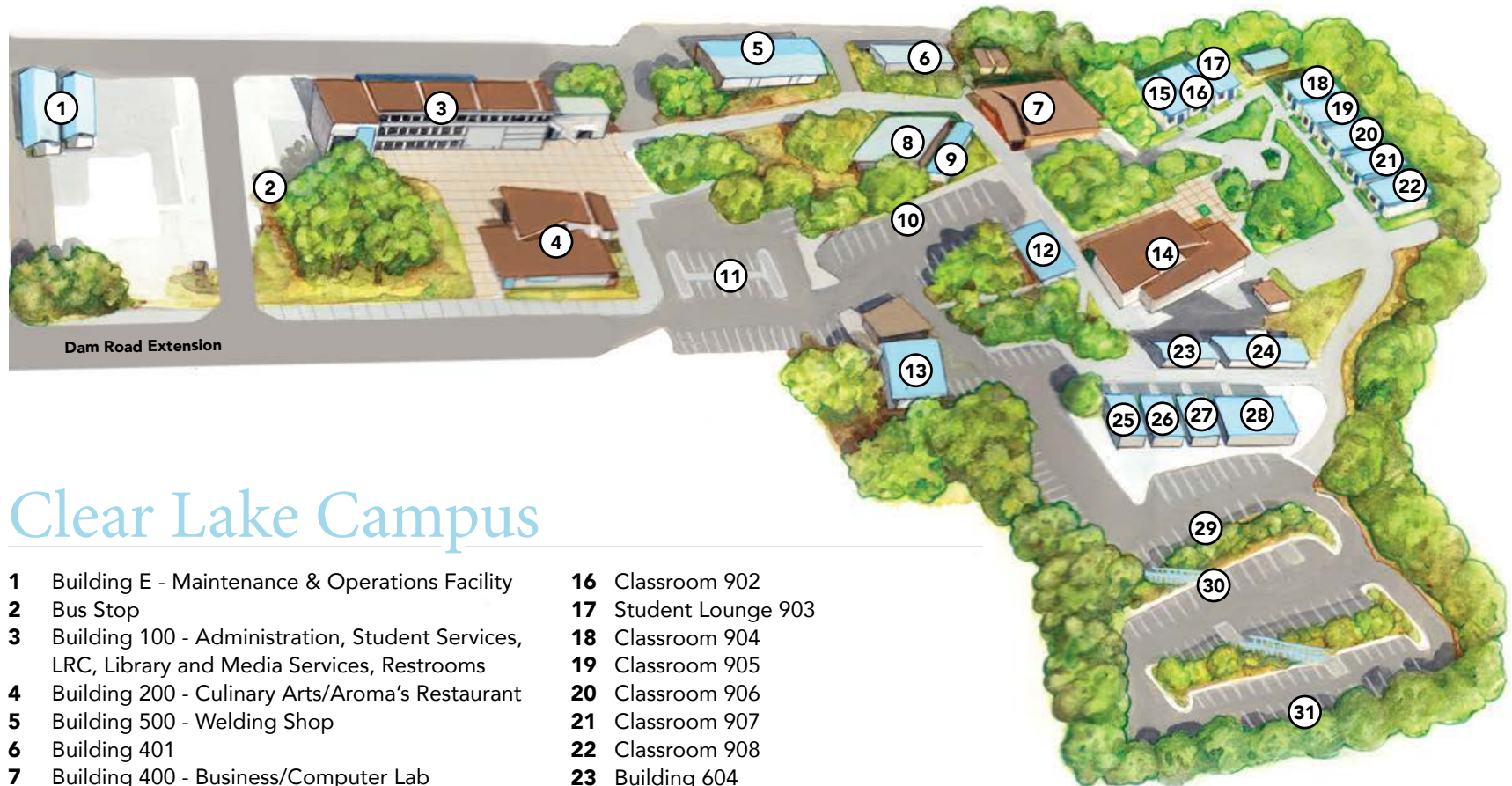
### Project Scope:

- Provide all necessary infrastructure to the site
- Parking lot, grounds improvements, fire lane
- Tilt-up construction of two-story 53,854 sq. ft. facility
  - Library
    - > Group study areas
    - > Student success area
    - > Computer access
  - Administration
  - Student café
  - 17 classrooms
  - 26 offices
  - 2 conference rooms
  - Restrooms



### Clear Lake





## Clear Lake Campus

- |   |                                  |
|---|----------------------------------|
| 1 Building E - Maintenance & Operations Facility  | 16 Classroom 902                 |
| 2 Bus Stop  | 17 Student Lounge 903            |
| 3 Building 100 - Administration, Student Services, LRC, Library and Media Services, Restrooms | 18 Classroom 904                 |
| 4 Building 200 - Culinary Arts/Aroma's Restaurant   | 19 Classroom 905                 |
| 5 Building 500 - Welding Shop   | 20 Classroom 906                 |
| 6 Building 401  | 21 Classroom 907                 |
| 7 Building 400 - Business/Computer Lab  | 22 Classroom 908                 |
| 8 Building 402 - Faculty/Adjunct Offices  | 23 Building 604                  |
| 9 Restrooms   | 24 Building 605                  |
| 10 Faculty/Staff Parking  | 25 Building 800                  |
| 11 Lower Level Parking  | 26 Building 601                  |
| 12 Student Bookstore  | 27 Building 602 - Faculty Lounge |
| 13 Building 801 - Childcare Development Center  | 28 Classroom 603                 |
| 14 Building 700 - Science/Math/Early Childhood Education, Restrooms                           | 29 Upper Parking Lot/ Level 1    |
| 15 Classroom 901  | 30 Upper Parking Lot/ Level 2    |
|   | 31 Upper Parking Lot/ Level 3    |





## NEW CONSTRUCTION

**Building 100 - Student Services/ Library**

**Building 200 - Culinary Arts**

**Building 700 - Science Facility**

Date Completed	Cost	Architect	Contractor
August 2012	\$17,893,532	TLCD Architecture	Sundt

A single architectural firm and one contractor was selected for the development of the three new LEED Silver buildings at the Clear Lake campus.

## Building 100 - Student Services /Library

### Square Footage Summary

Classroom	Laboratory	Office	Library	Support Space	Total ASF	Total GSF
965	1,914	2,943	4,132	4,392	14,346	16,111

This modern administration, student services and library building is fully equipped with modern technology to support student learning. The first floor includes administration, registration and office spaces, student services offices, police office space, restrooms and a computer laboratory. The second floor houses the new library with adequate space for hard copy resources.

## Project Scope:

- Infrastructure upgrades to accommodate new facility
- Grounds improvements
- Two-story building
  - First floor
  - > 16 Offices



- > Conference room
- > Computer lab
- > Student services
- > Administration
- Second floor
  - > Library
  - > Group study
  - > Reading spaces
  - > 2 offices
  - > Computer lab
- Restrooms
- Elevator

### Building 200 - Culinary Arts

#### *Square Footage Summary*

Classroom	Laboratory	Support Space	Total ASF	Total GSF
1,258	93	1,917	3,268	4,855

#### **Project Scope:**

- Two smart classrooms
- A complete restaurant/learning kitchen
- Restaurant seating for approximately 30 people
- Coffee bar with window service

### Building 700 - Science

#### *Square Footage Summary*

Laboratory	Office	Support Space	Total ASF	Total GSF
3,395	200	1,009	4,604	7,044

**Project Scope:**

- Two science laboratories, with associated service space
- Two faculty offices
- Group study area

**MINOR RENOVATIONS****Portable Classroom Improvements**

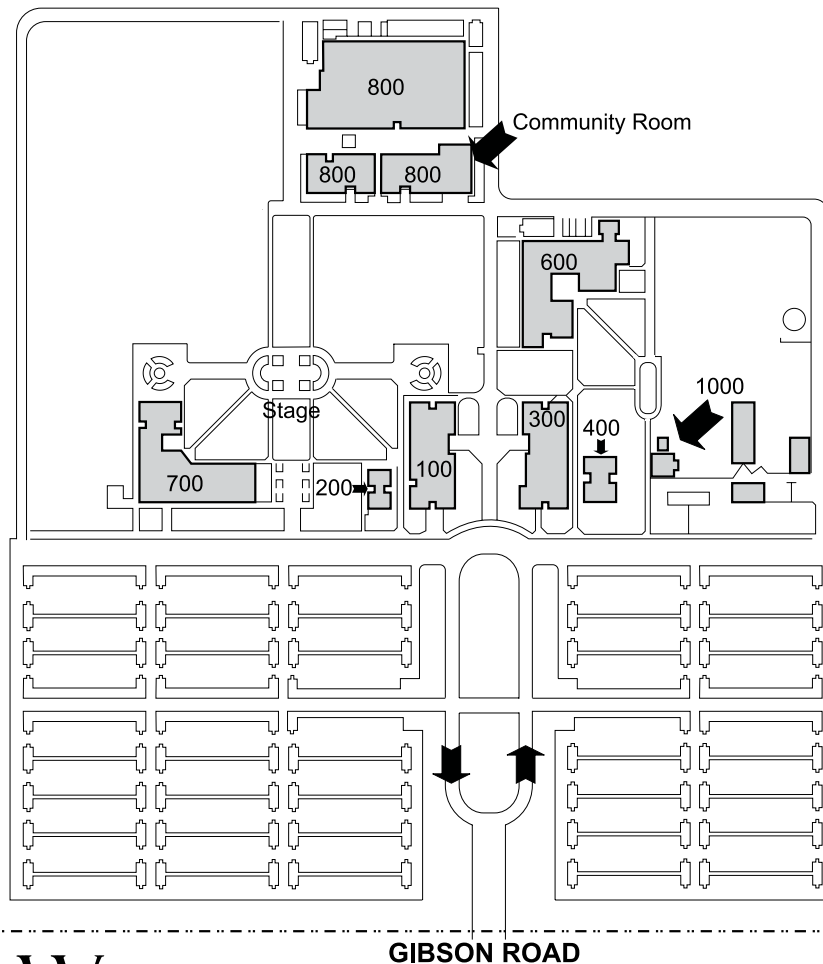
Cost
\$84,401

Portable classrooms at Clear Lake received new HVAC units and improvements to increase access to technology. Utilities and ADA improvements were also a part of this work.

## Woodland Community College



2300 E. Gibson Rd.  
Woodland, CA 95776  
530-661-5700



**WOODLAND**  
COMMUNITY  
COLLEGE

## LEGEND

### Building 100

Administration  
- President's Office  
- Vice President's Office  
Academic Senate  
Dean of Instruction  
Director of Maintenance  
HEP  
Mail Room/Receiving  
Multicultural Center  
Research Office  
Student Lounge  
- Barista's Choice  
- Food Vending

### Building 600

Biology Labs  
Classrooms  
Chemistry Labs  
Information Systems  
Faculty Offices

### Building 800

Classrooms  
Community Room  
Distributive Education  
Library  
Open Media Lab  
Tutoring Center  
Writing/Math Center (WAM)

### Building 1000

Child Development Center

### Building 200

Bookstore

### Building 300

Campus Police  
Classrooms  
Nursing Lab  
Geology Lab

### Building 400

Classrooms  
Ag-Plant Science  
Art Lab

### Building 700

Admissions and Records Office  
Assessment Lab  
Associated Students (ASWCC)  
CalWORKs  
CARE  
Career Center  
Counseling  
DSP&S  
EOPS  
Financial Aid  
Student Health Services  
Transfer Center  
TRiO Programs  
University Representatives  
Veterans Affairs



## RENOVATION PROJECTS

**Building 100 – Administration**

**Building 300 – Laboratory Classroom**

**Building 400 – Laboratory/ Ag**

Date Completed	Cost	Architect	Contractor
January 2009 – Geology Lab Interior August 2011- Buildings	\$4,833,031	Gelfand Partners MTWgroup – Geology Lab	Tecta America, Inc. (roofing on all) Hart Development (Geology lab, interior) SGC (Geology lab ADA path of travel work)

### *Building 100 - Square Footage Summary*

Laboratory	Office	Library	Support Space	Total ASF	Total GSF
537	2,956	210	6,967	10,667	10,920

### *Building 300 – Square Footage Summary*

Classroom	Laboratory	Office	Support Space	Total ASF	Total GSF
2,590	4,039	618	3,387	10,634	11,222

### *Building 400 – Square Footage Summary*

Classroom	Laboratory	Office	Total ASF	Total GSF
1360	1360	140	2,860	3,412

**Project Scope (all three buildings):**

- New roof for all buildings
- HVAC systems, electrical systems replaced
- Some conversion to larger classrooms
- Nursing laboratory upgrades
- New flooring
- ADA compliance in the buildings and for path of travel
- Renovation of the Geology Laboratory
- Hydronic piping to chiller
- Interior finish remodeling

**Building 700- Student Services Center**

Date Completed	Cost	Architect	Contractor
May 2010	\$3,351,312	GKKWORKS	Filner Construction

*Square Footage Summary*

Laboratory	Office	Library	Support Space	Total ASF	Total GSF
2,058	6,824	129	3,735	12,786	15,306

This building once housed the library and learning resource center that moved into the 800 building when it was constructed in 2007. The newly renovated Student Services Center provides program space and facilities for Admissions & Records, Assessment, Counseling, Financial aid, EOP&S/CARE, DSPS, CalWORKS, Upward Bound (TRIO), Veteran Affairs, Deans office, Campus Life & leadership, ASCC & student clubs, newspaper, student health services and the dean of Student Services office.

**Project Scope:**

- New boiler and chiller for the building
- Complete interior retrofit for Student Services functions with all new finishes
- New entry identity from parking lot, new exterior concrete work and landscaping
- Roof repair
- Repair building settlement damage
- Repair leaking windows
- ADA compliant
- Repair of building mechanical, electrical, AV, fire alarm, HVAC Systems

**GROUNDS IMPROVEMENTS**

Date Completed	Cost	Architect	Contractor
January 2009 – East Gibson grounds improvements May 2010 – Water Line	\$1,027,381	MTWGroup – East Gibson grounds improvements and parking Lionakis – Water Line	Procida Landscape (East Gibson improvements) Broward Builders (water line)

**Project Scope:**

- Parking improvements (resealing and striping), ADA compliance
- Domestic water-line connection (funded through the American Reinvestment and Recovery Act)
- Renovation of the existing berm along East Gibson Road with a particular focus on:
  - Remove or modify approximately 1300 linear feet of 8 foot high berm
  - New landscaping and irrigation
  - Remove shrubs from tree planters in parking lots and replace with low maintenance materials

**DEFERRED PROJECTS - PLANNING FOR FUTURE DEVELOPMENT**

The following projects were considered within the 2006 FMP, and completed some preliminary planning during the Measure J program. As a result, Measure J funding was expended on these projects. Should new funding be available, the District can consider resuming these projects.

**Performing/ Culinary Arts**

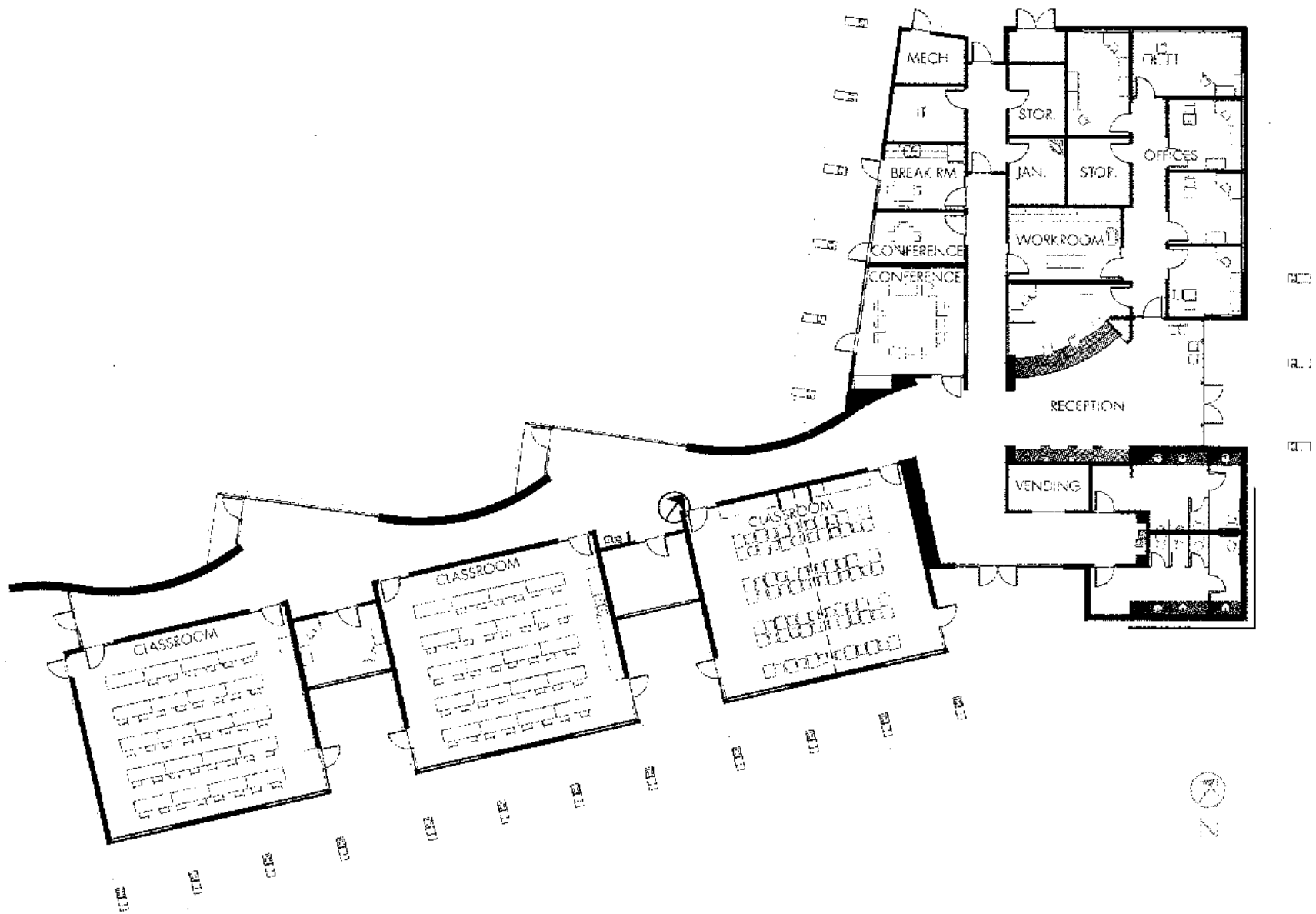
Completion Date	Cost
Deferred	\$1,071,164

**Multi-Purpose Athletic Facility**

Completion Date	Cost
Deferred	\$460,425

## Colusa County Outreach Center





FLOOR PLAN

## COLUSA COUNTY OUTREACH CENTER

### NEW CONSTRUCTION



Date Completed	Cost	Architect	Contractor
January 2011	\$5,835,657	BPA	Hilbers Inc.

#### Square Footage Summary

Classroom	Laboratory	Office	Library	Support Space	Total ASF	Total GSF
2,924	139	1,543	194	4,269	9,069	10,031

The Yuba CCD purchased a 5-acre site for the development of this new outreach center in Colusa County. The Colusa County center is a part of the Woodland Community College service area and can accommodate 120 students. The entire facility is equipped with wireless internet for student use. The facility houses student services that include registration support, financial aid, matriculation services, counseling, and TRIO Programs (Upward Bound and Student Support Services). In addition to the new building, there is a parking lot partially covered with solar panels to increase energy efficiency. This sustainable facility is LEED Silver.

The learning spaces at this center were designed to be flexible, and have the ability to meet the changing needs of students over time.

#### Project Scope:

- Parking
- Utilities and Infrastructure to accommodate the building and operation
- Grounds improvements
- Informal group study area
- Administration/ faculty offices/ student services area
- Two conference rooms
- Four smart classrooms
- Restrooms/ Vending

### ***DISTRICT-WIDE PROJECTS***

The following have been completed District-wide since the approval of the 2006 FMP.

#### **District-wide systems:**

- Energy Management System (EMS)
- Fire Alarm System
- GPS Clock System
- Telecom

**Accessibility Transition Plan**, completed by ImageWorks Architecture

**Facilities Standards**, completed by Gelfand Partners Architecture

# Conclusion

The Yuba Community College District made significant progress in completing the goals outlined in the original Facilities Master Plan. Access to services was dramatically increased with the improvements at each campus and the development of two new centers. All of the projects met the additional goals of providing sustainable facilities, increasing energy efficiency and building performance, while also increasing the technological capabilities of the spaces.

Yuba CCD was mindful of planning processes throughout the Measure J program. They relied on an Educational Master Plan, as well as the Facilities Master Plan, to guide the capital program. To refine the individual projects, user groups were formed and the shared governance structure helped create a foundation for meaningful collaboration. The District developed sustainable goals which led to all new facilities constructed to LEED Silver standard. Additionally, renovation projects dramatically increased energy efficiency and indoor air quality and thermal comfort. Finally, an ADA Transition Plan helped guide the necessary improvements to help create an environment that is welcoming and accessible.

The Citizens Bond Oversight Committee (CBOC), met regularly to review Measure J expenditures and budgets. The District was transparent in spending, allocated all funding appropriately, and passed the financial audits performed.

The chart on the following page depicts the projects as outlined in the Measure J program, and the actual work that has been completed. In reviewing the table, it is clear what work remains for any future consideration.

## 2006 FMP GOALS – PROGRESS CHART: YUBA COLLEGE

Yuba College	2006 FMP Projects	Project Information	Status
Renovation/ADA	<ul style="list-style-type: none"> <li>All existing buildings</li> </ul>	<p>Full Renovations Completed:</p> <ul style="list-style-type: none"> <li>1200- P.E. Building and Fields</li> <li>1800- DSPS</li> <li>1100- Library/ Language Arts</li> <li>400- Theater</li> </ul> <p>Many buildings received minor upgrades; however, major renovation work is still needed throughout most of the buildings on campus.</p>	Partially Complete
New Construction	<ul style="list-style-type: none"> <li>A 60,000 sq ft. classroom building to support health occupation programs and expand science and math offerings</li> </ul>	The Health and Public Safety Building was completed and included a campus walk, east parking lot improvements and a fire tower and vehicle storage for public safety vehicles	Complete
Infrastructure/Systems	<ul style="list-style-type: none"> <li>Replace aged electrical systems and increase capacity for technology</li> <li>Heating and cooling systems replacement</li> <li>All underground utilities are past useful life and need replacement</li> </ul>	<p>Completed (all sites):</p> <ul style="list-style-type: none"> <li>Energy Management System (EMS)</li> <li>Fire Alarm System</li> <li>GPS Clock System</li> <li>Telecom</li> </ul> <p>Yuba Specific Improvements:</p> <ul style="list-style-type: none"> <li>Two new chillers</li> <li>New fire water line</li> <li>Technology systems improvements</li> </ul> <p>Still needed:</p> <ul style="list-style-type: none"> <li>New boilers are needed</li> <li>Some underground infrastructure still needs replacement</li> <li>One chiller still needs to be replaced</li> </ul>	Partially Complete
Technology	Upgrades needed in all buildings	Until all building have been renovated, there will still be technology upgrades needed throughout campus. Distance education opportunities were increased with the renovation of the library building that now includes the distance education facility.	Partially Complete

## 2006 FMP GOALS – PROGRESS CHART: SUTTER COUNTY EDUCATIONAL CENTER

Sutter County Center	2006 FMP Projects	Project Information	Status
New Construction	<ul style="list-style-type: none"> <li>50,000 sq. ft. classroom building with 10-12 contemporary classrooms</li> <li>District office facility</li> </ul>	<ul style="list-style-type: none"> <li>The Sutter County Center houses 17 contemporary classrooms</li> <li>District offices were not constructed on this site</li> </ul>	Completed, with the exception of the District office building.

## 2006 FMP GOALS – PROGRESS CHART: CLEAR LAKE CENTER

Clear Lake Center	2006 FMP Projects	Project Information	Status
Renovation/ADA	All existing buildings	Existing buildings received upgrades, but there are many older portable facilities housed on site that provide classroom space. This will need to be addressed in the future.	Partially completed
New Construction	Demolition of 3 portables and construction of a 30,000 sq. ft. building with large classrooms, student services, library and bookstore Expanded facilities for culinary arts and instruction Science/lab facility	Three portables were demolished and three new buildings were constructed: <ul style="list-style-type: none"> <li>Student services/ library</li> <li>Culinary arts</li> <li>Science</li> </ul> The bookstore is housed in a portable on site was not included in the new facilities.	Completed
Infrastructure/Systems	Improvements to utilities, expansion for new facilities and technology	Completed	Completed
Technology	Expand and update technology infrastructure and access	Completed	Completed

## 2006 FMP GOALS – PROGRESS CHART: WOODLAND COMMUNITY COLLEGE

Woodland College	2006 FMP Projects	Project Information	Status
Renovation/ADA	Renovate existing facilities to co-locate all student services functions and replace roof on building 700	Building 700 received a complete renovation, and roof replacement. Student services are co-located within this building.	Completed
New Construction	<ul style="list-style-type: none"> <li>Visual and Performing Arts center</li> <li>Food service operations space with capacity for 200, including a commercial kitchen suitable for a culinary arts instructional program</li> </ul>	<ul style="list-style-type: none"> <li>Some planning was done for this facility but it was not built</li> <li>Some planning was completed, but this was not built</li> </ul>	Incomplete
Infrastructure/Systems	Upgrades necessary to support new buildings and expanded technology	<ul style="list-style-type: none"> <li>New buildings did not materialize but the renovations included expansion of technology and infrastructure upgrades.</li> <li>New water distribution line.</li> </ul>	Partially complete
Technology	Upgrade all existing classrooms into smart classrooms	All renovated classrooms were provided capacity for increased technology. Also, with the relatively new 800 building, this campus offers adequate technology to support the learning environment.	Mostly complete

## 2006 FMP GOALS – PROGRESS CHART: COLUSA COUNTY CENTER

Colusa Center	2006 FMP Projects	Project Information	Status
New Construction	<ul style="list-style-type: none"> <li>A District-owned facility for outreach educational services</li> </ul>	<ul style="list-style-type: none"> <li>The District purchase a 5-acre site and constructed an outreach center in Colusa County</li> </ul>	Completed

The following is a budget summary outlining the actual costs (numbers are rounded):

## BUDGET SUMMARY MEASURE J PROGRAM

FMP 2006	Yuba	Sutter County	Clear Lake	Woodland	Colusa County
New Construction	\$23,375,630		\$17,893,532	\$1,668,985*	
Educational Centers		\$29,625,247			\$5,354,884
Renovations/ Upgrades	\$32,167,801*		\$84,079	\$9,202,278	
Payoff Borrowings**	\$2,971,026		\$3,053,258	\$2,000,000	
District-wide Telecom/Security	\$4,550,150				
<b>Total**</b>	\$58,514,458	\$29,625,247	\$21,030,870	\$12,871,263	\$5,354,885

\*Includes planning money spent for new buildings or renovations, for Yuba, this number does not include approximately \$7M in state funding for the library renovation.

\*\*Amounts are approximate for Yuba and Woodland

\*\*\*Total amounts do not include district-wide telecom

## YUBA COMMUNITY COLLEGE DISTRICT FACILITIES INVENTORY 2014

Description/Location	Acres	Total Buildings Gross Sq. Ft.
Yuba College 2088 North Beale Road Marysville, CA 95901	162	423,652
Woodland Community College 2300 E. Gibson Road Woodland, CA 95677	120	143,039
Clear Lake Campus 15880 Dam Road Extension Clearlake, CA 95422	10	63,010
Colusa Outreach Center 99 Ella Street Williams, CA 95987	4.6	10,031
Sutter County Educational Center 3301 East Onstott Yuba City, CA 95993	20	53,854
Total: All Sites	292	521,939

Source: FUSION database

When the 2005-06 FMP was produced it stated that according to the District's Space Inventory, the District had 39 buildings, 26 permanent and 13 modular with approximately 341,438 square feet of educational building space. The following table outlines the current space in 88 buildings throughout the District.

### 2014 ASSIGNABLE SQUARE FEET SUMMARY

#### Yuba College

Lecture	Laboratory	Office	Library	AV/TV	Support Areas	Total
39,188	65,369	41,735	25,611	6,653	123,863	302,419

#### Sutter County Center

Lecture	Laboratory	Office	Library	AV/TV	Support Areas	Total
17,402	412	6,451	2,710	0	18,530	45,505

#### Clear Lake Center

Lecture	Laboratory	Office	Library	AV/TV	Support Areas	Total
11,775	14,409	8,642	4,132	0	12,834	51,792

#### Woodland Community College

Lecture	Laboratory	Office	Library	AV/TV	Support Areas	Total
21,144	19,174	18,653	18,464	828	33,932	121,264

#### Colusa County Outreach Center

Lecture	Laboratory	Office	Library	AV/TV	Support Areas	Total
2,924	139	1,543	194	0	4,269	9,069

#### District Total

Lecture	Laboratory	Office	Library	AV/TV	Support Areas	Total
92,433	99,503	77,024	51,111	7,481	193,428	520,980

Source: FUSION database